

PART OF NE 1/4 OF NE 1/4, SEC. 4, T.6N., R.2E., S.12. E.

TRI-ACRES SUBDIVISION

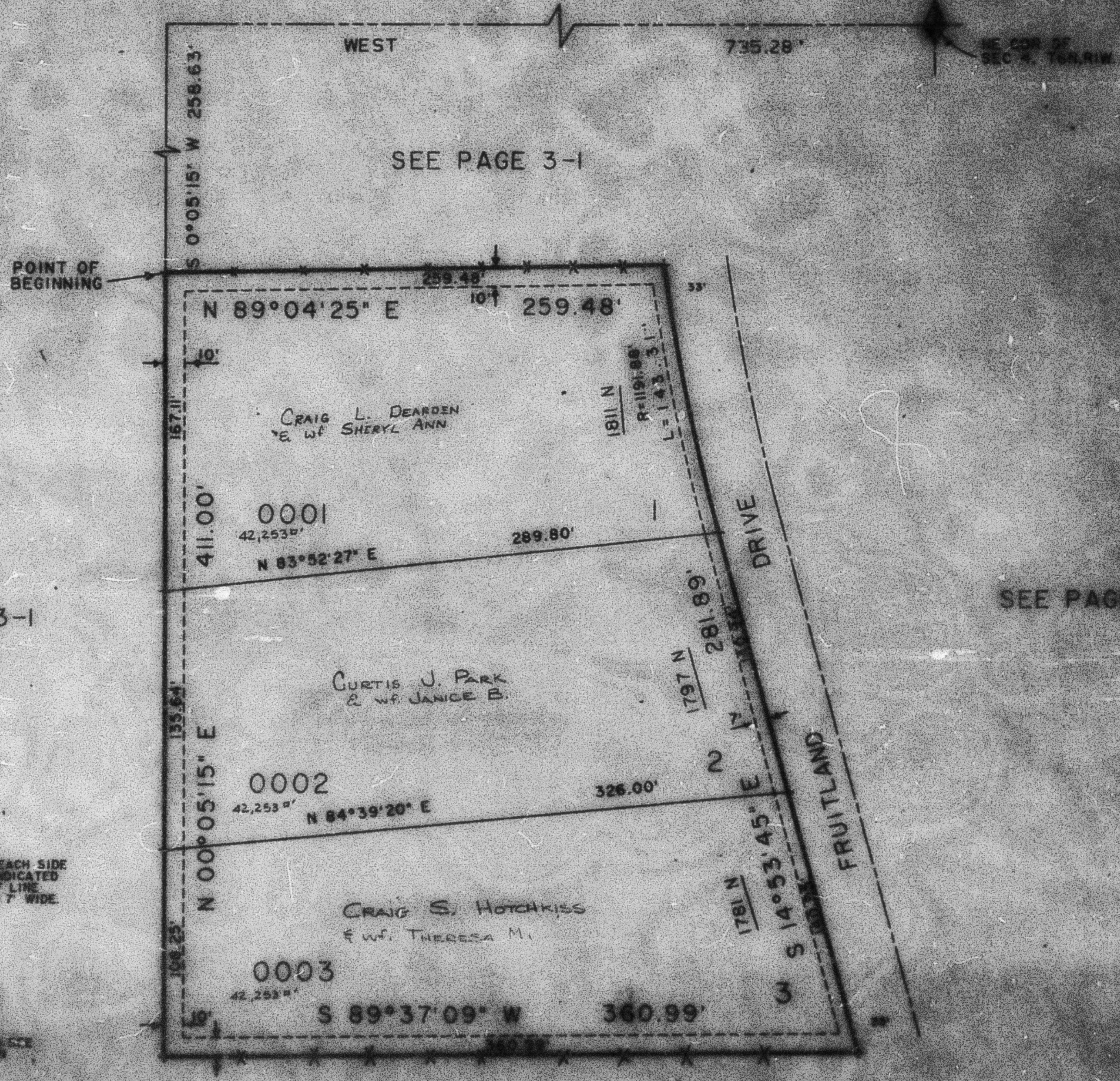
TAXING UNIT: 149

LOTS 1 TO 3

WEBER COUNTY

SCALE 1" TO 50'

EXCEPT WHERE OTHERWISE SHOWN
ALL LOTS FORMED BY
SCOTT W. CROSBY & WIFE
LEANN N.



SEE PAGE 3-1

SEE PAGE 3-1

SEE PAGE 3-1

SEE PAGE 3-1

10' UTILITY EASEMENTS EACH SIDE
OF PROPERTY LINE AS INDICATED
BY DASHED LINES. FRONT LINE
UTILITY EASEMENTS ARE 7' WIDE.

FOR COMPLETE DATA SEE
PLAN ON PAGE 12